

1

BREAKAGE REPORTING

DIGITAL
VISION
INC.

2

BREAKAGE DEPARTMENTS <3-8-1> MENU



3

BREAKAGE INQUIRY

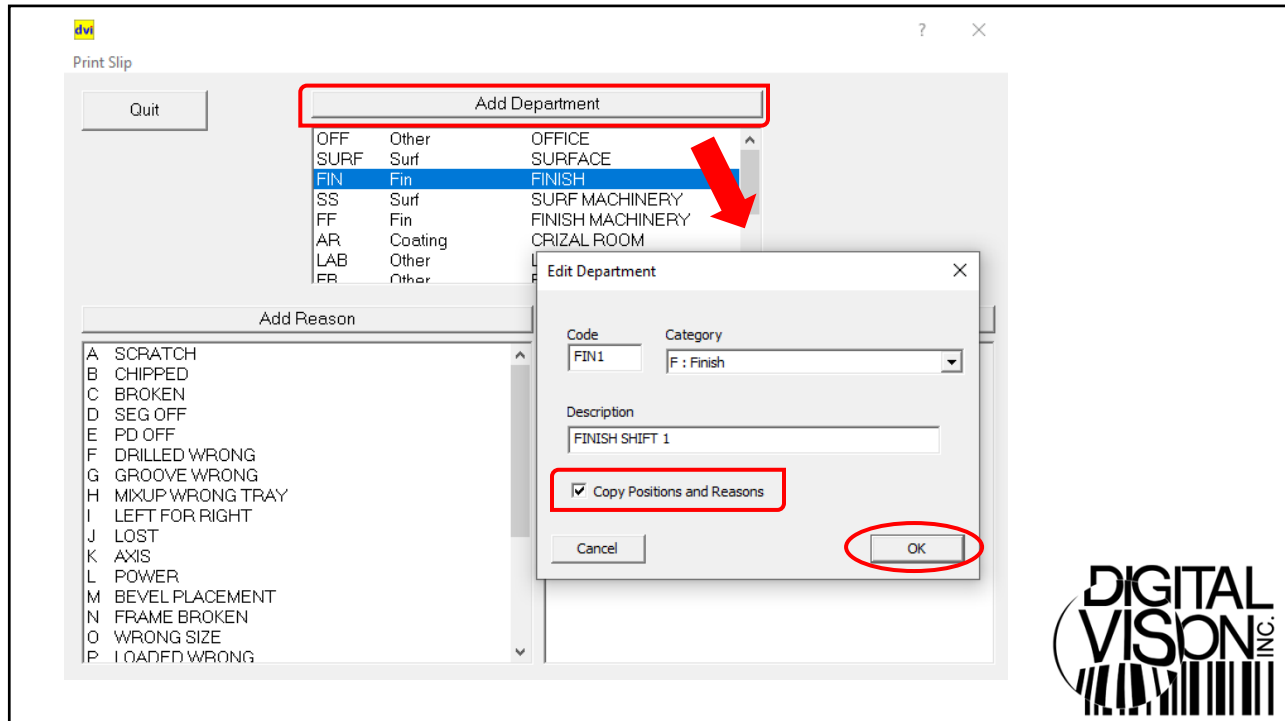
Breakage Lookup

F2: Filter F4:Display Job F6:Cancel F7:Print F8:Trace Summary ALT-F8:Breakage TRACE Summary TRACE Station Breakage F12:Account Inquiry Configure

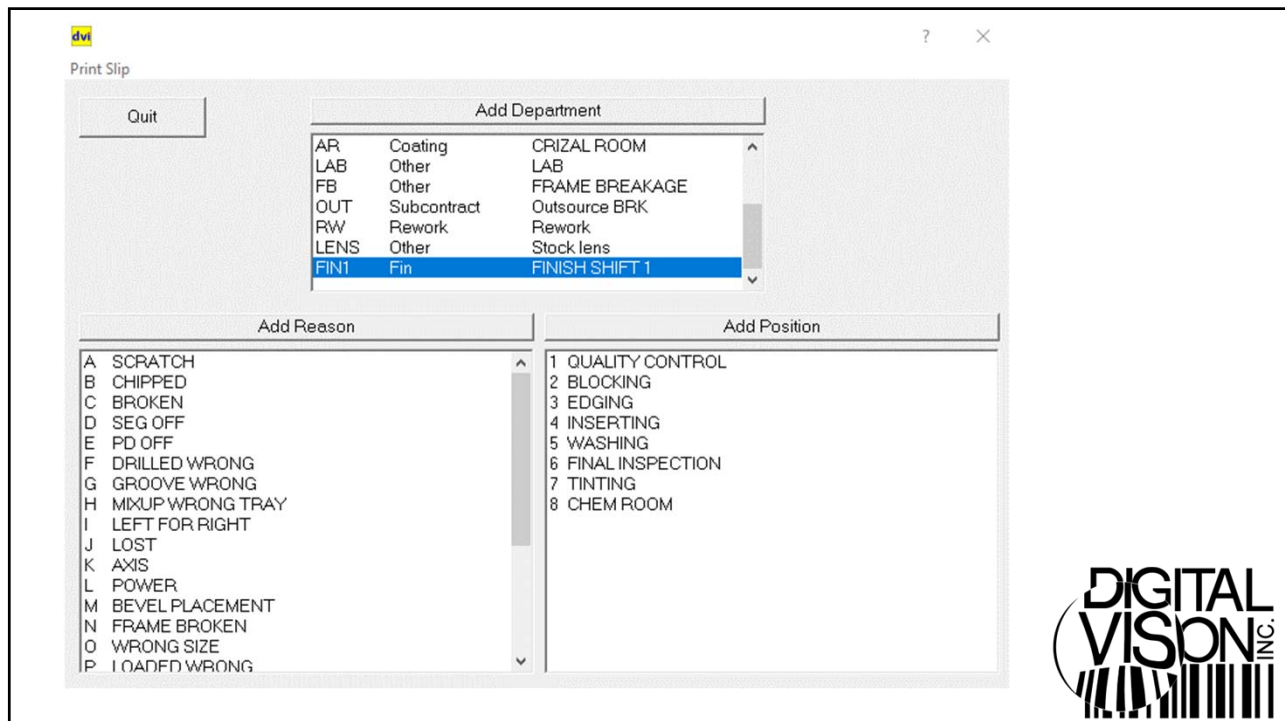
Tray	InvNum	Breakage Date	Department	Position	Reason	By	Part	Digital Style	Lens Mfr	Lens Sz	Lens Style	Lens Mat	Lens FJS	Cost
			FIN2											
4965	591059	05/15/20 01:34PM	fin2 finish shift 2	4 inserting	a scratch	07	L		VX	78	VX PHYSIO	BLY	S	0.00
4816	590909	05/15/20 01:25PM	fin2 finish shift 2	3 edging	b chipped	16	L		VX	81	NEW COMFORT	PLY	S	30.42
4793	590886	05/15/20 01:33PM	fin2 finish shift 2	2 blocking	a scratch	06	R		XL	71	ST28	G	S	0.00
4298	590314	05/15/20 01:31PM	fin2 finish shift 2	1 quality control	a scratch	00	R	COMFORT S DRX	KB	80	COMFORT S DRX	PRY	S	43.89



4



5



6

Print Slip

Quit

Add Department

OFF	Other	OFFICE
SURF	Surf	SURFACE
FIN	Fin	FINISH
SS	Surf	SURF MACHINERY
FF	Fin	FINISH MACHINERY
AR	Coating	CRIZAL ROOM
LAB	Other	LAB
FR	Other	FRAME BREAKAGE

Add Reason

A PITS IN COATING	1 COATING ROOM
B SCRATCHES	
C MIX UP	
D PROCEDURE ERROR	
E MACHINE MALFUNC	
F DEFECTIVE COAT	
G STRIP FAILED	
H DRIP MARK	
I BASKET FAILURE	
J BROKEN	
K FORGOT TINT	
L TINTING ERROR	
M BASKET CRASH	
N POWER	


Edit Department

Code: AR

Category: A : Coating

Description: CRIZAL ROOM

Cancel OK



7

Print Slip

Quit

Add Department

FF	Fin	FINISH MACHINERY
AR	Coating	CRIZAL ROOM
LAB	Other	LAB
FR	Other	FRAME BREAKAGE
OUT	Subcontract	Outsource BRK
RW	Rework	Rework
LENS	Other	Stock lens

Add Reason

A Power	0 Eco Router 7200
B Axis	1 Omega Dallas
C Prism	2 Chesapeake
D Scratched	3 21st Century
E Thickness	4 Pech
F Generator Marks	5 Custom Eyes
G Laser Engravings	6 VSF-Versant/DBL
H Small/Cut Out	7 AccuRx
I Recvd W/O Coat	8 Glass-CE
J Recvd Wrong Base	9 iCoat
K Recvd Wrong Eye	10 NACL
L Mixup/Lost	11 Eyenavision
M Tint	12 Teflon/Zeiss
N Ghost Marks	13 RB-Luxottica
O Coating Flows	
P Coating Pits	


Edit Department

Code: OUT

Category: N : Subcontract

Description: Outsource BRK

Cancel OK



8

Archive Reporter
 File View Edit Catalogs Advanced

Report: @MATBR Title: LENSES BY MATERIAL Created: Modified: 03/08/22

Description: F5:Run Report Lock Report Create Debug Output

Date Range: From: 02/16/22 To: 02/16/22

Formula Editor: @COT [New] [Edit] [Save] [Copy]
 COTBRKN/LENSCOTD

Data to Include:
 Data Name
 LENS SUP
 SURFBKRN
 =%@SURF
 FINBRKN
 =%@FIN
 COTBRKN
 =%@COT
 SUBBRKN
 =%@SUB

9

BREAKAGE INQUIRY <3-8-8> MENU

Breakage Lookup

F2: Filter F4: Display Job F6: Cancel F7: Print F8: Tray History ALT-F8: Breakage TRACE Summary TRACE Station Breakage F12: Account Inquiry

Tray	InvNum	Breakage Date	Department	Position	Reason	By	Part	Digital Style	Le	Use Base Styles	Lens Style
2001	723849	06/24/19 11:30AM	rw rework	1 rework	a rework		P	COMFORT DRX	GE		
2000	723848	08/28/19 08:47AM	lab lab	a lab	a not posted		P		ES		
2000	723848	08/28/19 08:44AM	rw rework	1 rework	a rework		P		ES		
5251	591345	04/20/20 12:02PM	fin finish	3 edging	a scratch		R		ES		
5228	591320	04/20/20 01:52PM	eco eco breakage	1 eco	a eco-power		R		GE	70	ST28
5159	591250	04/20/20 01:43PM	fin finish	1 quality contr	a scratch		R		ES	70	SV
5023	591113	04/16/20 01:37PM	off office	2 tracing	h traced sma		R	VX X DESIGN	VX	78	VX X DESIGN
4991	591085	04/20/20 01:43PM	fin finish	1 quality contr	k axis		L		ES	79	SV
4965	591059	05/15/20 01:34PM	fin2 finish shift 2	4 inserting	a scratch	07	L		VX	78	VX PHYSIO
4954	591048	04/16/20 03:04PM	fin finish	1 quality contr	b chipped		R		VX	69	VX PHYSIO
4838	590931	04/20/20 12:02PM	ff finish machinery	4 optronics	7e a slipped ed		L		VX	78	NEW COMFORT
4816	590909	05/15/20 01:25PM	fin2 finish shift 2	3 edging	b chipped	16	L		VX	81	NEW COMFORT
4798	590891	04/16/20 12:05PM	fin finish	3 edging	b chipped		P		ES	70	SV
4793	590886	05/15/20 01:33PM	fin2 finish shift 2	2 blocking	a scratch	06	R		XL	71	ST28
4627	590703	04/13/20 01:35PM	off office	1 data entry	a wrong entr		P		KB	76	ST28

Configure
 Use Base Styles
 Previous Day
 Previous Week
 Previous Month
 Shipped Jobs

10

BREAKAGE INQUIRY

Breakage Lookup

F2: Filter F4: Display Job F6: Cancel F7: Print F8: Tray History ALT-F8: Breakage TRACE Summary TRACE Station Breakage F12: Account Inquiry Configure

Tray	InvNum	Breakage Date	Department	Position	Reason	By	Part	Digital Style	Lens Mfr	Lens Sz	Lens Style	Lens Mat	Lens F/S	Cost
5139	586059	03/19/20 01:43PM	eco	eco breakage	1 eco	a eco-power	P	NEW COMFORT E	VX	81	NEW COMFORT	PLY	S	45.08
9260	589266	03/25/20 03:45PM	eco	eco breakage	1 eco	a eco-power	L		VX	81	NEW COMFORT	PLY	S	30.42
9342	584708	03/16/20 04:36PM	eco	eco breakage	1 eco	a eco-power	P		VX	81	NEW COMFORT	PLY	S	57.08
	557226	02/05/20 09:45AM	eco	eco breakage	1 eco	a eco-power	P		VX	81	NEW COMFORT	PLY	S	60.84
	544171	01/17/20 05:46PM	eco	eco breakage	1 eco	a eco-power	R		VX	81	NEW COMFORT	PLY	S	26.79
	514034	11/29/19 12:00PM	eco	eco breakage	1 eco	a eco-power	R		VX	81	NEW COMFORT	PLY	S	25.79
	493032	10/28/19 06:26PM	eco	eco breakage	1 eco	a eco-power	R		VX	81	NEW COMFORT E	PLY	S	30.42
	488011	10/18/19 03:19PM	eco	eco breakage	1 eco	a eco-power	R		VX	81	NEW COMFORT	PLY	S	30.42
	478569	09/30/19 01:49PM	eco	eco breakage	1 eco	a eco-power	L		VX	81	NEW COMFORT E	PLY	S	30.42
	479800	10/04/19 01:58PM	eco	eco breakage	1 eco	a eco-power	P		VX	81	NEW COMFORT	PLY	S	60.84
	472864	09/18/19 12:19PM	eco	eco breakage	1 eco	a eco-power	L		VX	81	NEW COMFORT	PLY	S	26.79
	467908	09/12/19 04:19PM	eco	eco breakage	1 eco	a eco-power	L		VX	81	NEW COMFORT	PLY	S	29.54
	440768	07/22/19 05:35PM	eco	eco breakage	1 eco	a eco-power	R		VX	81	NEW COMFORT	PLY	S	30.42



11

BREAKAGE INQUIRY

Breakage Lookup

F2: Filter F4: Display Job F6: Cancel F7: Print F8: Tray History ALT-F8: Breakage TRACE Summary TRACE Station Breakage F12: Account Inquiry Generate Excel Configure

Tray	InvNum	Breakage Date	Department	Position	Reason	By	Part	Digital Style	Lens Mfr	Lens Sz	Lens Style	Lens Mat	Lens F/S	Cost	Station	Logged By	Promi:
7344	239872	02/14/2	lab	lab	a lab	a no	P	COMF ES	79	SV	TPY	S	0.00			MD	
6676	239578	02/11/2	lab	lab	a lab	a no	R	EYEZE ES	76	SV/B	BLY	S	0.00		R-SE9090-3	CC	
5590	239108	02/14/2	fin	finis	1 quality	a sco	R	ES	70	SV	PLY	F	1.05		R-SE9090-3	CA	
4792	238747	02/14/2	lab	lab	a lab	a no	L	ES	65	SV	PLY	F	1.05			AP	
4023	238411	02/14/2	ff	finis	1 me-10	a sli	L	VX X C VX	81	VX X DE	PLP	S	57.82			CA	
9436	238125	02/14/2	off	offi	6 outside	q dr	SF	KB	76	SV/E	PLP	S	19.00			SF	



12

CUSTOMIZED BREAKAGE REPORT <3-8-7> MENU



13

Customized Breakage Report Writer

F2: Add or Copy Report F3: Save Report F5: Save and Run Report F6: Delete Report F8: Print Report View Report Analyze

Select Report: DAYMET

From: 5/18/2020 To: 5/18/2020

Daily Monthly
 Weekly Custom

Run at Cycling
 Lock Report

Grid Options

Sort: A Show: D Rows: R Cols: P Catg: A Display Rx Date in Excel

Run at Cycling
 Lock Report

14

DVI Workshop 2020 Breakage Grid Report 05/18/20 10:16 AM Page 1
 04/18/20 - 05/18/20
 Breakage Cost Grid
 ALL DEPARTMENTS

DEPT ECO BREAKAGE

ECO			
ECO -POWER	7.35		

DEPT FINISH MACHINERY

PIRNCS			
7E			
SLIPPED EDGING	48.94		

DEPT FINISH

QUALIT			
CONTRL EDGING TOTAL			
SCRATCH	1.05	1.10	2.15
AXIS	29.97	0	29.97
TOTALS	31.02	1.10	32.12

DEPT FINISH SHIFT 2

QUALIT					
CONTRL BLCKNG EDGING NSRING TOTAL					
SCRATCH	43.89	0	0	0	43.89
CHIPPED	0	0	30.42	0	30.42
TOTALS	43.89	0	30.42	0	74.31



15

Post Breakage

F1: Post F4: Clear F6: Breakage Inquiry F7: Edit Lens

Tray/Invoice: 4298

Part Broken: R

Department: FF FINISH MACHINERY

Position: 8 OPTRONICS 7E 5

Reason: C BEVEL PLACEMENT

Station: 077 OPTRONICS 7E #5

ID: 08 BILL PRIMAKOV

Date: 5/18/2020

Time: 10:51:59 AM

Cost/Lens:

Job Breakage History

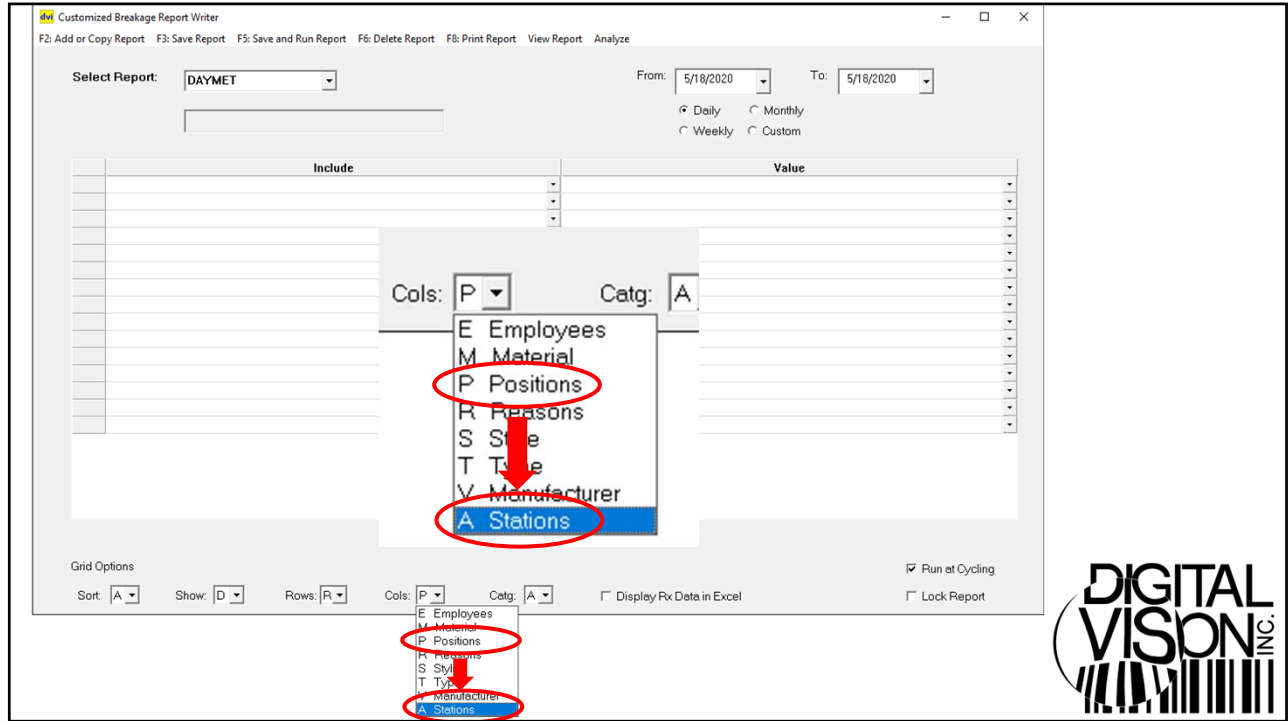
- #1 04/09 11:38A OFF 2 H R
- #2 04/09 12:49P FF 5 B L
- #3 05/15 01:31P FIN2 1 A 00 R

Tray 4298 has had 003 lens breakages !!!

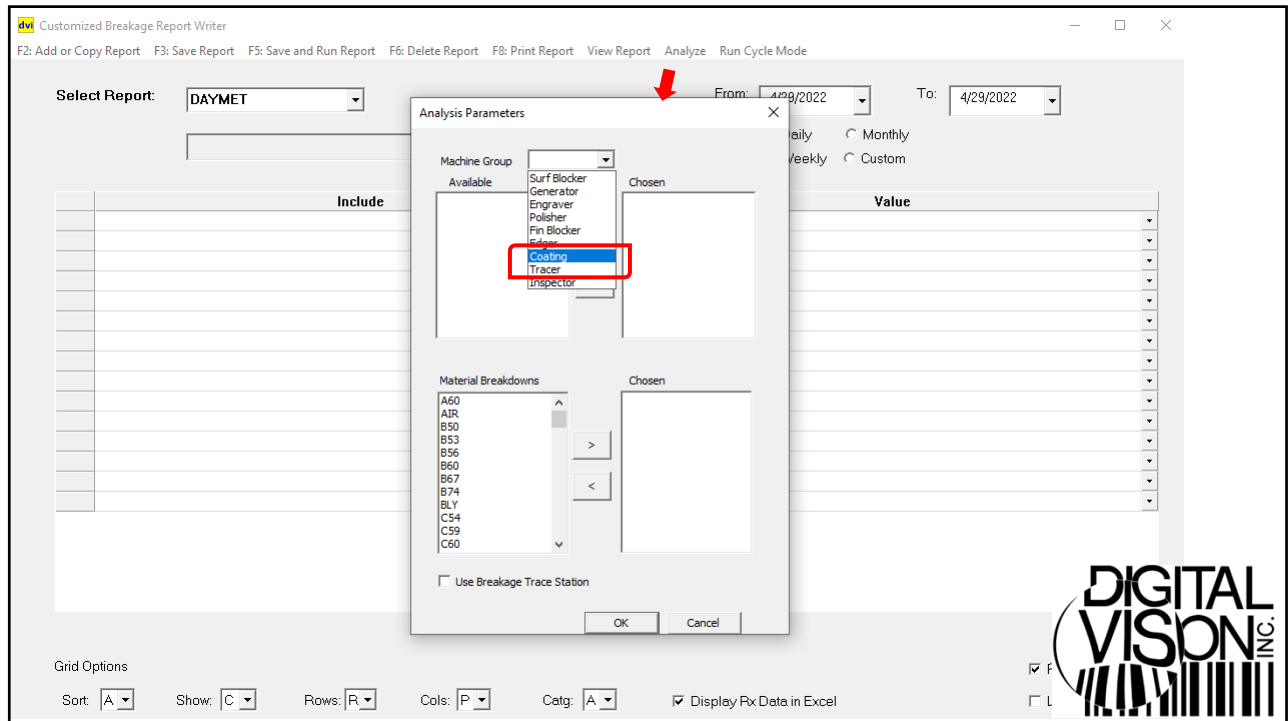
	MF	SZ	S/F	MAT	STYLE	Base/Sph	Cyl	Add	Col	Cot	Cost	QOH	QOO
Right Lens	KB	80	S	PRY	COMFORT S DRX	6.25	250		ESC		43.89		
Left Lens													



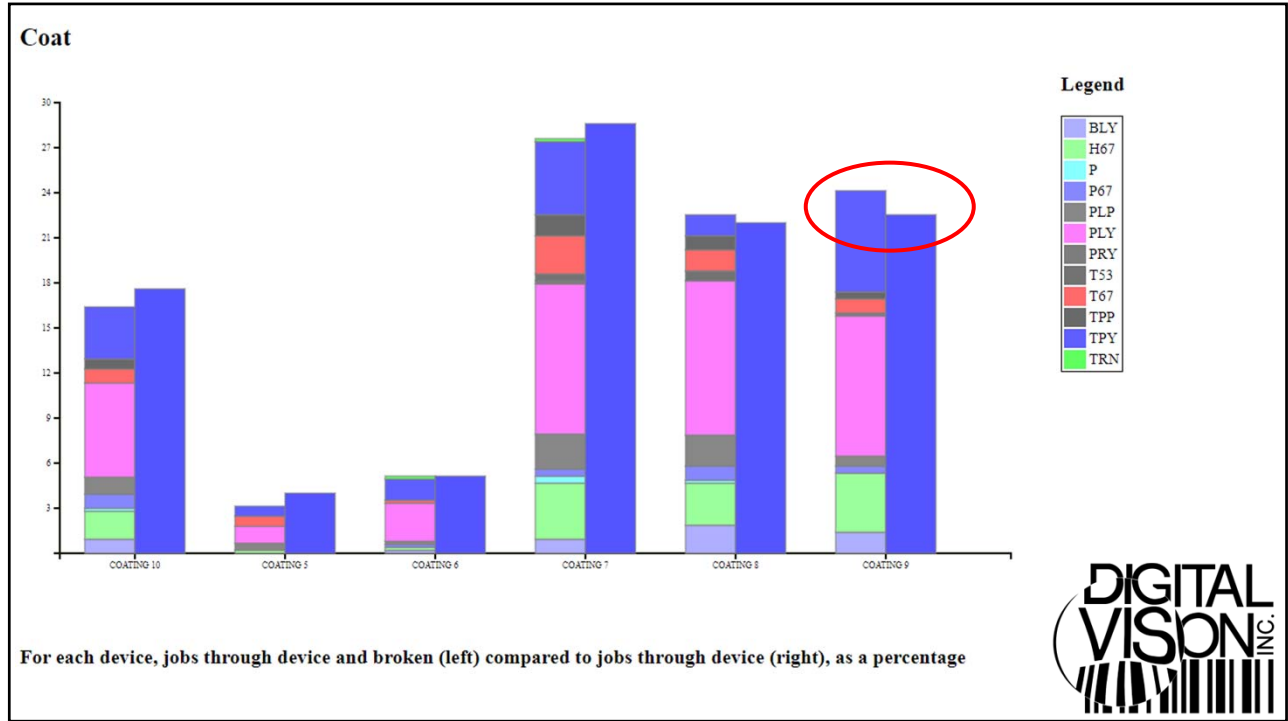
16



17



18



19

**LATE JOB REPORTS
<TR-2-4> MENU**

DIGITAL VISION INC.

20

Late Job Reports
 F1 Add or Copy Report F2 Save Report F3 Print Report F4 View in WSP View in Excel F5 Save and Run Report F6 Delete Report Run Batch Configure

REPORT: LATE Description: 5 DAYS IN LAB

Job Inclusion
 In Lab At Current Station
 for
 Days
 Hours: Minutes

Current Station
 1 TRACER #1
 2 TRACER #2
 3 TRACER #3
 4 TRACER #4
 5 TRACER #5
 6 RECOMBOLULATE
 7 REMOTE TRAYUP
 8 COMBOB QUEUE
 9 REMOTE FTC
 10 RX ENTRY
 11 NEW WORKTICKET
 12 REMOTE ENTRY
 13 REMOTE LO TRAY1
 14 CUST CALLBACK
 15 INFO RECEIVED
 16 HOLD
 17 STOCK ROOM
 18 DIG INITIATOR
 19 LOG LENSES SF
 20 LOG LENSES FIN
 22 REMOTE PRE ORD
 23 LENS ORDER
 24 LENS BACKORDER
 25 LENS RECEIVED
 26 REMOTE LO
 27 WAIT FOR FRAME
 28 SENT FRAME
 29 FTC SHELF
 30 FTC RECEIVED
 31 FTC BIN

Department
 GLASS
 PLASTIC
 POLY
 HIRES
 MISC
 DIGITAL

Category
 ORDER ENTRY
 STOCK
 PROCESSING
 SURFACE
 FINISH
 SPECIAL
 COATING
 I AR


Status

Report Format
 Date in report
 Account Number
 Invoice Number
 Semi or Finished
 Uncut/Edge
 Edge Type
 Frame Status
 FTCBIN
 Coats
 Combob Queue
 Subcon Vendor

Sort by Breaks
 Account L

Jobs/Dept (MAX):


Lock Report Run at Closedown
 Batch 2
 Batch 3
 Batch 4



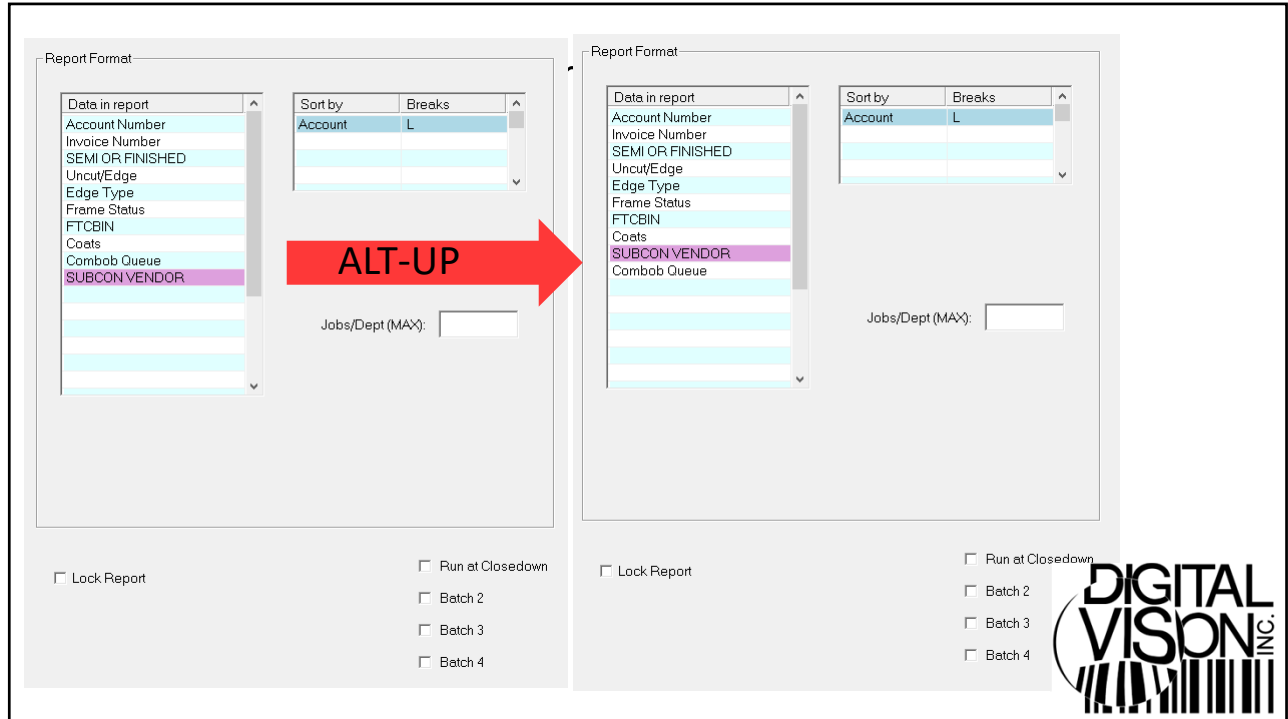
21

TITLE: 5 DAYS IN LAB
 THE NUMBER OF JOBS SELECTED FOR OUTPUT WAS 4457

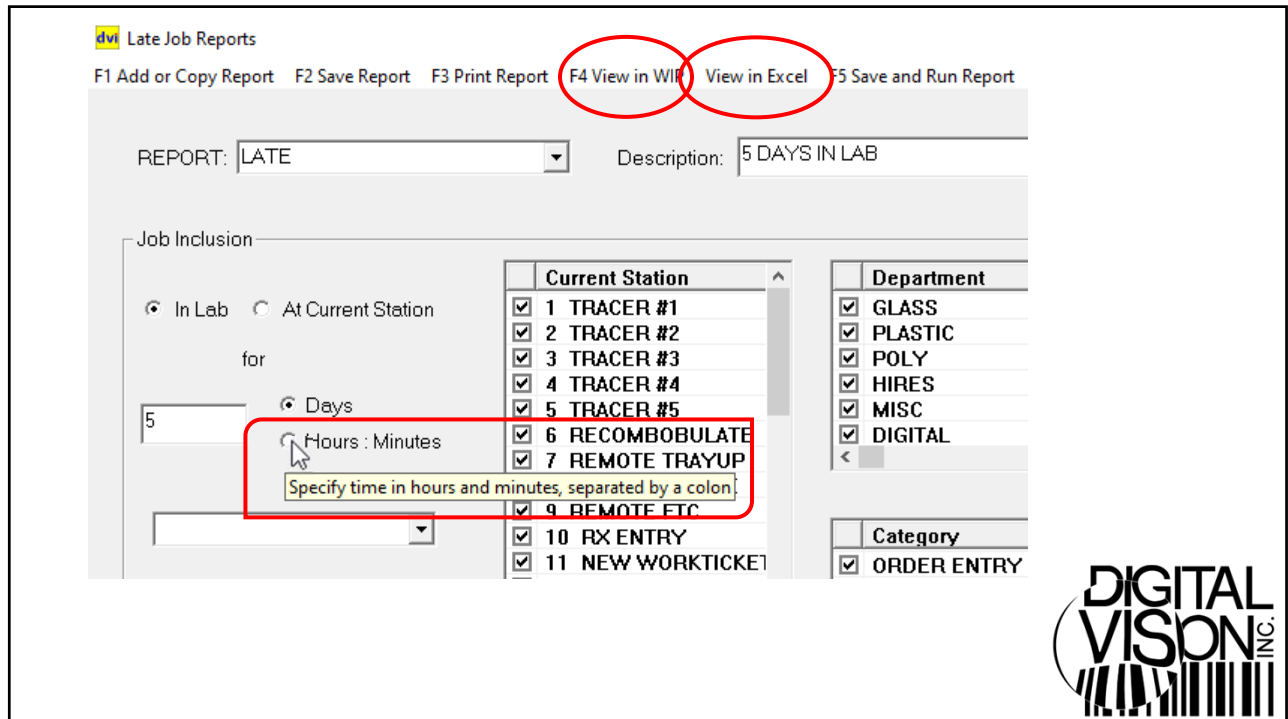
Acct	Invoice	S or F	Uncut/Edge	Edge Type	FrmStat	FTCBIN	Coats	Combob Queue	Subcon Ven
ACCT: 9	DELAWARE OPTICAL			503-231-5606					
9	240541	S	N	D4	L		C2P	Sub Con Sent	CHO
ACCOUNT TOTAL = 1									
ACCT: 184	LOUISIANA OPTICAL			503-231-5606					
184	234523	S	E	HB	D	059-C			ECO
184	240341	S	E	GD	N			Sub Con Sent	ECO
184	240447	S	E	HB	N			Sub Con Sent	ECO
184	237938	F	E	GD	D	040-A		Edged - Fin	
184	240576	S	E	GD	N		TD2	Sub Con Sent	ECO
184	240682	F	N	GD	L			Edged - Fin	
184	240843		N	HB	L		TD2	Sub Con Sent	ECO
ACCOUNT TOTAL = 7									
ACCT: 254	MINNESOTA OPTICAL			503-231-5606					
254	239389	S	E	HB	N	037-R		Wait for Frame	ECO
ACCOUNT TOTAL = 1									



22



23



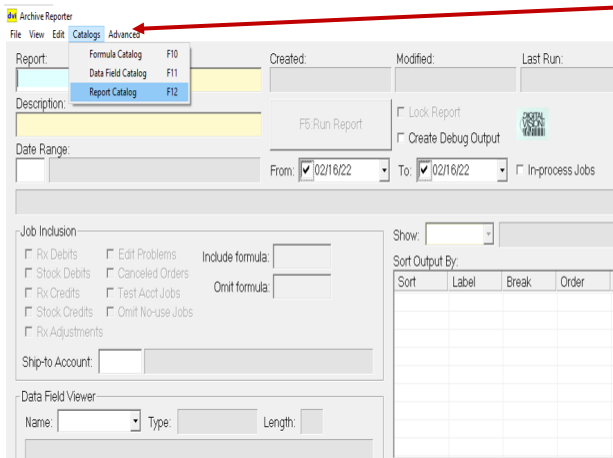
24

ARCHIVE REPORT WRITER <3461> MENU



25

Enhanced Features: Archive Report Writer



To see all available reports



26

Enhanced Features: Archive Report Writer

Report Catalog

Edit Selected | Delete Selected | Import Selected | Export to ARCHICUST | Export to ARCHIMP

Lab Reports | Standard Reports | Customer Reports | Importable Reports

Name	Title	Description
ACCOLD	ACCOLADE SALES	ACCOLADE R
Lab Reports	Standard Reports	Custom
ACCOUNTE	SALES REP STA	Jobs sorted by
@ARCOT	AR COATING	
@ARCT2	AR COATING	
@ARCT4	AR COATING	
@ASPSD	Aspheric finished	

- ❖ Lab Reports – Custom built at the lab level
- ❖ Standard Reports – Default supplied by DVI
- ❖ Customer Reports – Lab specific reports shared between labs
- ❖ Importable Reports – Shared reports made available to lab to import

27

Enhanced Features: Archive Report Writer

Data Field Catalog

All Categories | Job | Lens | Frame | Misc | Account | Coat | Trace | Company | Format

Field	Type	Len	Para	Categ	Description
ADDPW	/RATIO	6	Y	Lens	Add Power
ADDRESS	STRING	28	Y	Account	street address
BASEPREF	/RATIO	6	Y	Lens	Lens base curve preferred
BASESPEC	/RATIO	6	Y	Lens	Lens base specified
BASEUSED	/RATIO	6	Y	Lens	Lens base used
CITY	STRING	18	Y	Account	city
COMMENT1	STRING	20	Y	Account	customer account
COMMENT2	STRING	20	Y	Account	comment fields
CONTACT	STRING	4	Y	Account	rx or stock sales contact
EYEFIELD	STRING	20	Y	Job	selects pre-translated Eyefinity field
FAX	STRING	23	Y	Account	fax number
FINBASE	/RATIO	6	Y	Lens	Finished Lens base curve
GROUPCODE1	STRING	4	Y	Account	Account group/start key 1
GROUPCODE2	STRING	4	Y	Account	Account group/start key 2
GROUPCODE3	STRING	4	Y	Account	Account group/start key 3
GROUPCODE4	STRING	4	Y	Account	Account group/start key 4
JOB_SUPP	STRING	32	Y	Job	
LENSAX	/RATIO	6	Y	Lens	Lens rx axis
LENSBASE	/RATIO	6	Y	Lens	lens base curve
LENSCODE	STRING	1	Y	Lens	single letter lens type. S: SY B: BIFOCAL T: TRIFOCAL D: DOUBLE ADD E: EXECUTIVE R: RUI
LENSCOL	STRING	3	Y	Lens	lens color
LENSCYL	/RATIO	6	Y	Lens	lens cylinder
LENSMAT	STRING	4	Y	Lens	lens material
LENSMF	STRING	4	Y	Lens	lens manufacturer

- New parameterized fields
- More flexibility to see specific data

28

Enhanced Features: Archive Report Writer

➤ Enter the parameterized data and double click in the Param field to view and choose the option (details only)

SHIPNAME	TRAYNUM	Right Add Power
391465 OKLAHOMA OPTICAL	9451	550
549710 SOUTH DAKOTA OPTICAL	5034	500
549710 SOUTH DAKOTA OPTICAL	5108	500
527362 OREGON OPTICAL	7157	400
619331 DELAWARE OPTICAL	7407	350
438755 IOWA OPTICAL	9729	350
187660 MISSISSIPPI OPTICAL	9548	350
202331 MISSISSIPPI OPTICAL	8633	350
440233 MONTANA OPTICAL	6201	350
187690 NEBRASKA OPTICAL	6421	350
454311 NEW JERSEY OPTICAL	6777	350
564311 NEW JERSEY OPTICAL	6934	350



29

Enhanced Features: Archive Report Writer

➤ Or you can use in a formula

SHIPNAME	TRAYNUM	Right Add Power
177965 ALABAMA OPTICAL	6789	250
297826 ALABAMA OPTICAL	6686	250
297825 ALABAMA OPTICAL	9433	250
487655 ALABAMA OPTICAL	4219	250
504832 ALABAMA OPTICAL	4427	250
504832 ALABAMA OPTICAL	6230	250
504832 ALABAMA OPTICAL	6347	250
504832 ALABAMA OPTICAL	9605	250
504832 ALABAMA OPTICAL	9676	250
551611 ALABAMA OPTICAL	7267	250
177975 ALASKA OPTICAL	5510	250
455745 ALASKA OPTICAL	8450	250
455745 ALASKA OPTICAL	9244	250
455745 ALASKA OPTICAL	8450	250
455745 ALASKA OPTICAL	9244	250
455745 ALASKA OPTICAL	8450	250
455745 ALASKA OPTICAL	9244	250



30

Enhanced Features: Archive Report Writer

❖ Launch the report results directly into Excel (.csv)

❖ See the report results in Account Inquiry

Job#	P12 Search	Account	Operator	Material	Color	Quantity	Unit	Material	Color	Quantity	Unit
9058	SP1YNALA	#217538	CHASE LINDA	gold							
9842	SP1YUAGO	#248843	MARTINDALE PHELI	blue/gun							
9080	564C264	#217949	SMITH, TIMOTHY	brnsh/brwn							
9901	6059013	#239342	WATSON, SAVANNAH	gold/tree gold							
6184	13886	#239360	HANS, DAVID	shiny grey							
7697	SP1YLO8	#237180	CONTI LEONORA	blue							
5949	57225102	#233475	FLOEGL, MARK J	05.0n.cry grey							



31

Enhanced Features: Archive Report Writer

❖ Email report results to a DVI operator (WSR)

Job#	P12 Search	Account	Operator	Material	Color	Quantity	Unit	Material	Color	Quantity	Unit
9058	SP1YNALA	#217538	CHASE LINDA	gold							
9842	SP1YUAGO	#248843	MARTINDALE PHELI	blue/gun							
9080	564C264	#217949	SMITH, TIMOTHY	brnsh/brwn							
9901	6059013	#239342	WATSON, SAVANNAH	gold/tree gold							
6184	13886	#239360	HANS, DAVID	shiny grey							
7697	SP1YLO8	#237180	CONTI LEONORA	blue							
5949	57225102	#233475	FLOEGL, MARK J	05.0n.cry grey							



32

Enhanced Features: Archive Report Writer

❖ Email report results to the account

DIGITAL VISION INC.

33

New Archive Report fields:



- 1STCYCLE – Cycle date of 1st closedown
- BIZDAYS – Actual number of weekdays (Monday - Friday minus holidays) in process
- BRKSPPOSTED – Number of breakage postings to a job
- CNCLREASON – Reason for cancelation
- COTBRKN - Number of lenses broken in any breakage department in the Coating category
- FRCVDAYS – Number of workdays jobs was in process after receiving frame
- LENSSUB - Number of lenses subcontracted
- MISCUPC/MSCPROD – Misc UPC and product code
- MONO_DIST_PD – Monocular Distance Pd
- MONO_NEAR_PD – Monocular Near Pd

34

New Archive Report fields:



- ORIGORIG - Origin of original job (redos only)
- PARAMETERIZED FIELDS - Examples are PRODMACH, PRODTIME, EFAN, ORIGFIELD, EYEFIELD
- PREPHOUR – Number of hours between order entry and stocklogging or subcontracting
- PRODHOUR – Number of hours between shipping and stocklogging or subcontract receive
- **QUARTERLY REPORTING – New reporting period options, see ALT –W**
- SAVE AS FEATURE - Ability to save the report results as needed
- STRIPPABLE – Items marked as strippable in lens picklist
- SUBASPH – If an Aspheric–SV lens was substituted for SV
- SUBBRKN – The number of lenses broken in any breakage department in the Subcontract category
- TRACETIME –Time that the job first hit the station specified by the parameter. Format is MM/DD HH:MM

```

use REPORTFORM to specify the
date range to include in process work.
The number "1" to the left of the date will do. Example: current week
date format) MONTHLY
or for previous calendar month
Special Dates:
I - Ingress Week
O - Order + Previous Close Date
M - Mark to Date
N - Next to Date
Q - Quarter to Date
Y - Year to Date should be top
P - Previous Day
su - Previous Day (Previous Close Date)
1k - Previous Week
1h - Previous Hour
1d - Previous Day
1m - Previous Month
1q - Previous Quarter
1y - Previous Year (Should be top
and should be top)
If a month number of the cycle month you
wish to report on.
If a number is report on. Job you will
be terminated and deleted.

```

35

New Archive Report fields:



- UUID – Unique ID number
- WAITINFO – Days waiting for Missing info
- WIZCODE – Lens style code as defined in the Rx Wizard
- WORKDAY – Current workday. Can be used in formulas


36

STATS Jan1 2005 - Jan1 2022

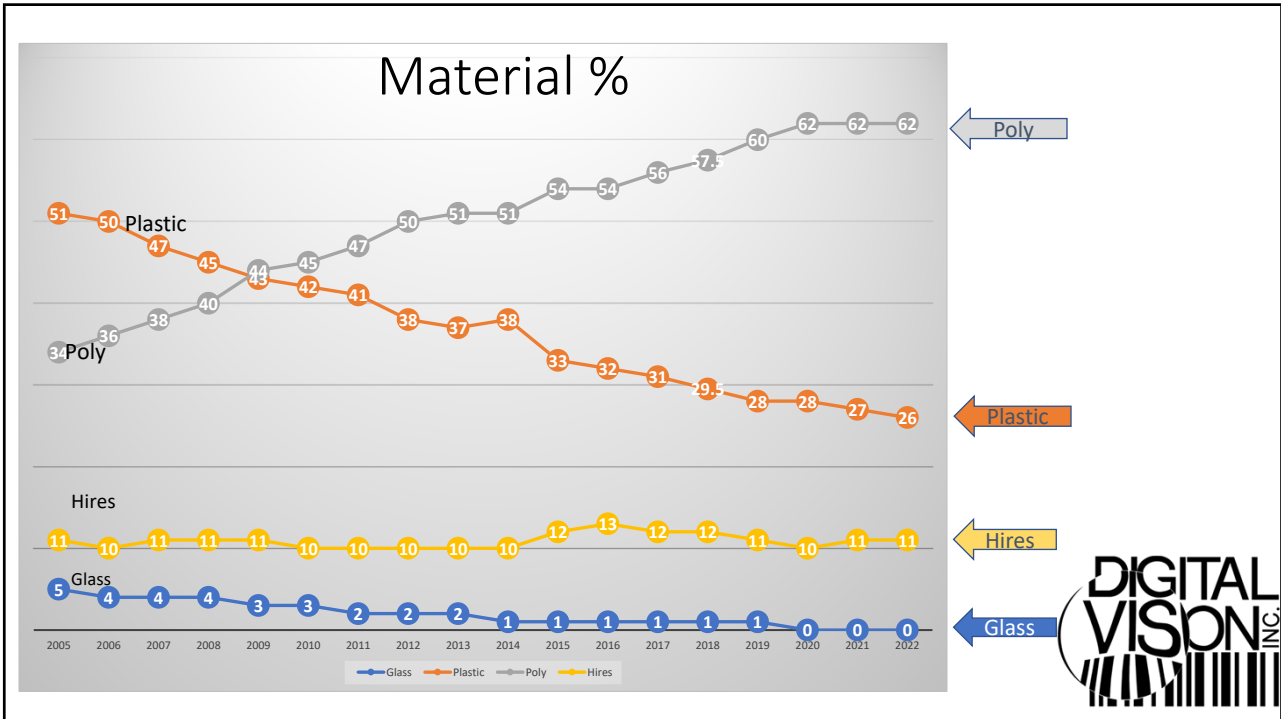
Report is called MO_STATS.TXT

In 3-7 Print Display Reports

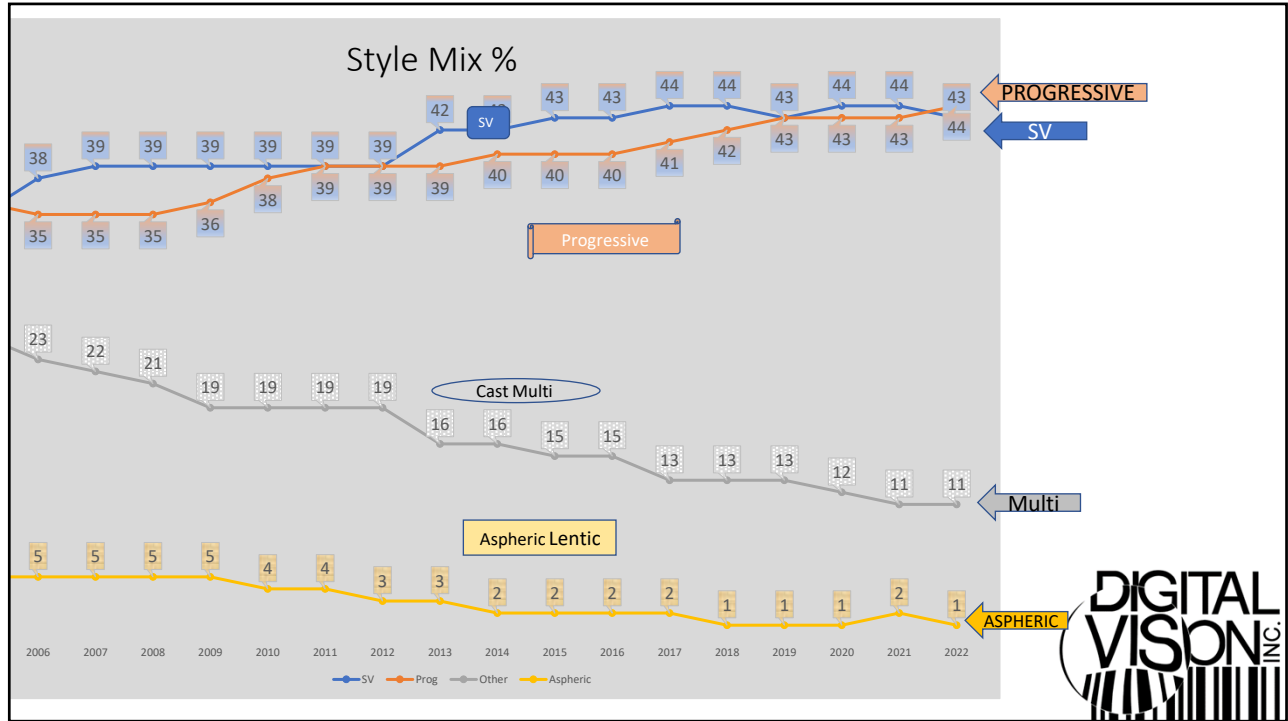
- 155 participating Wholesale labs



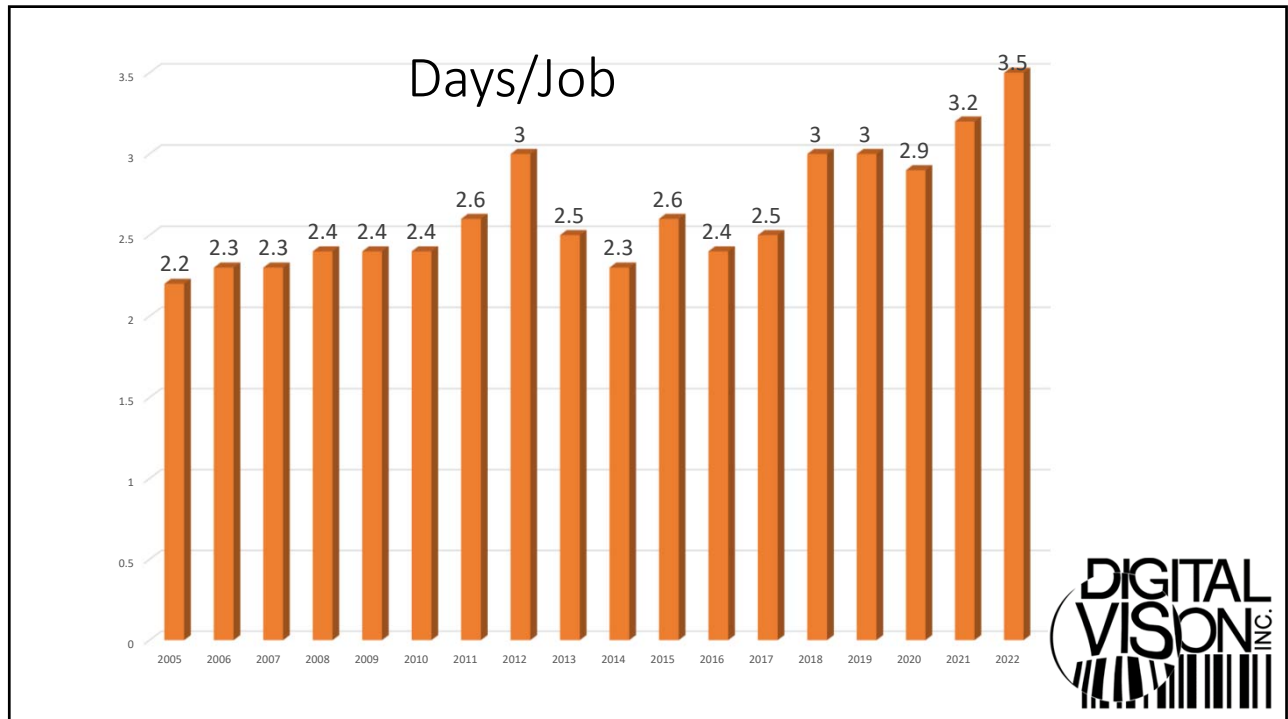
37



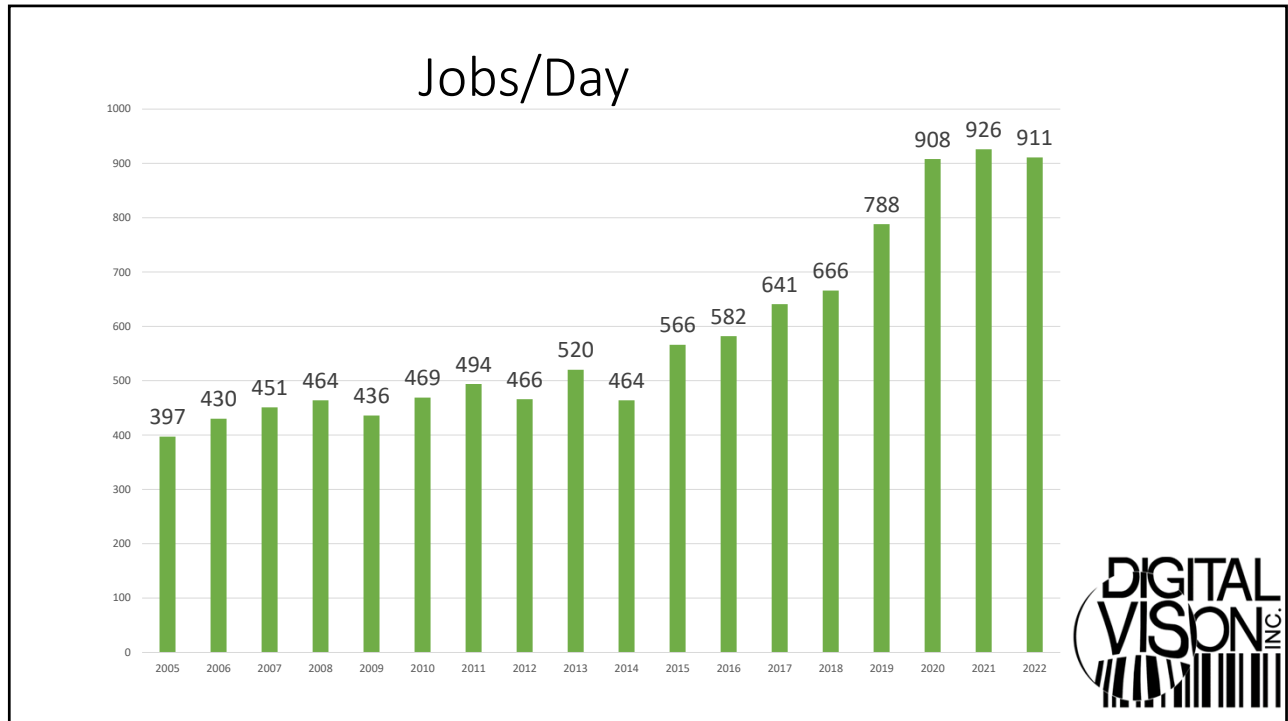
38



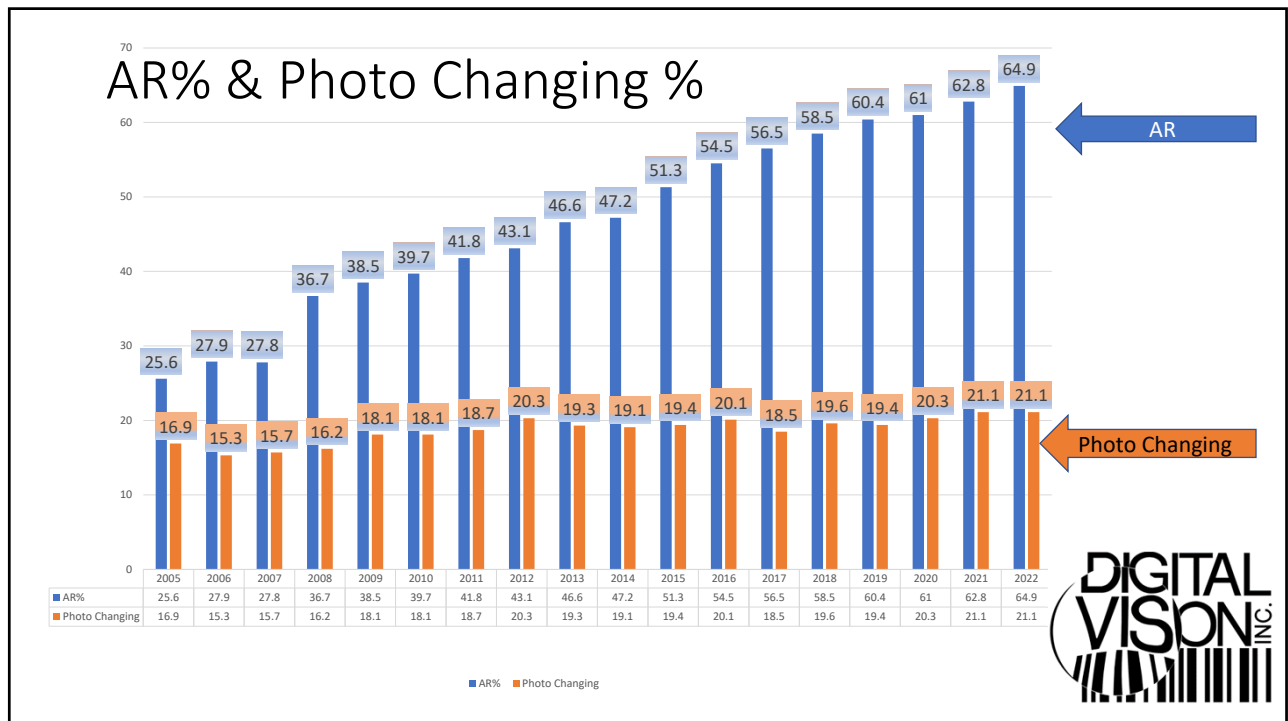
39



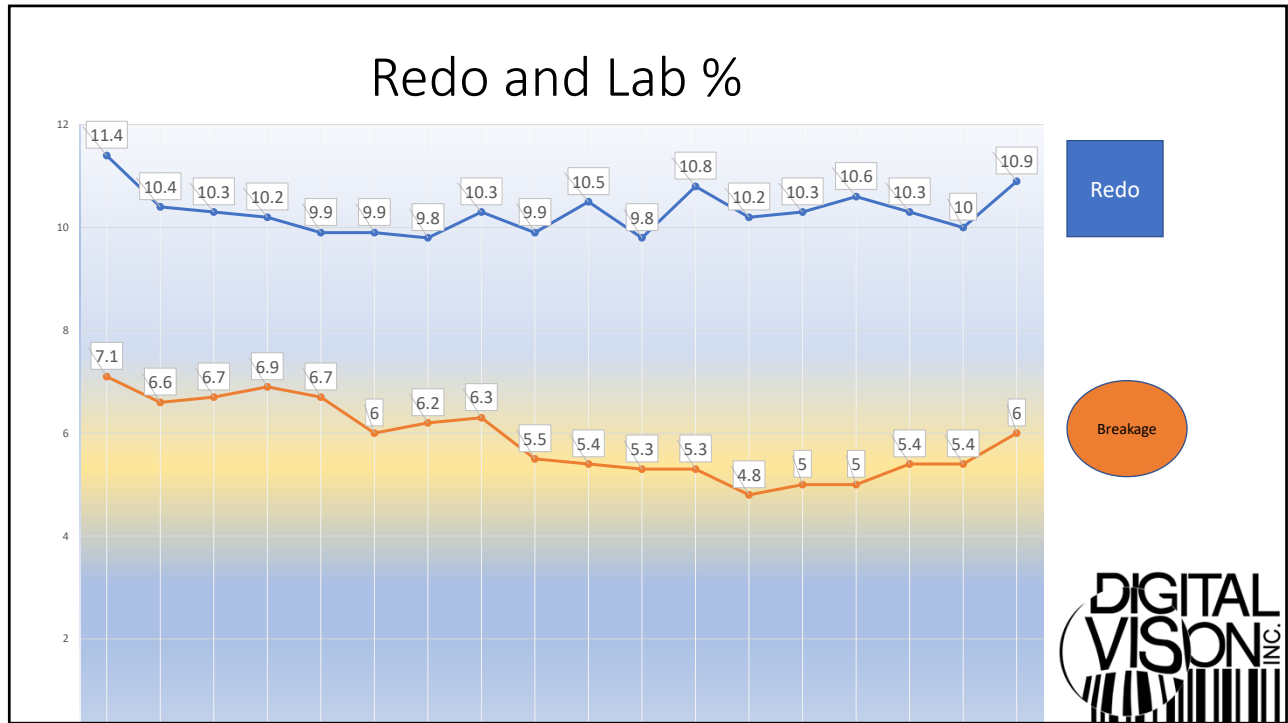
40



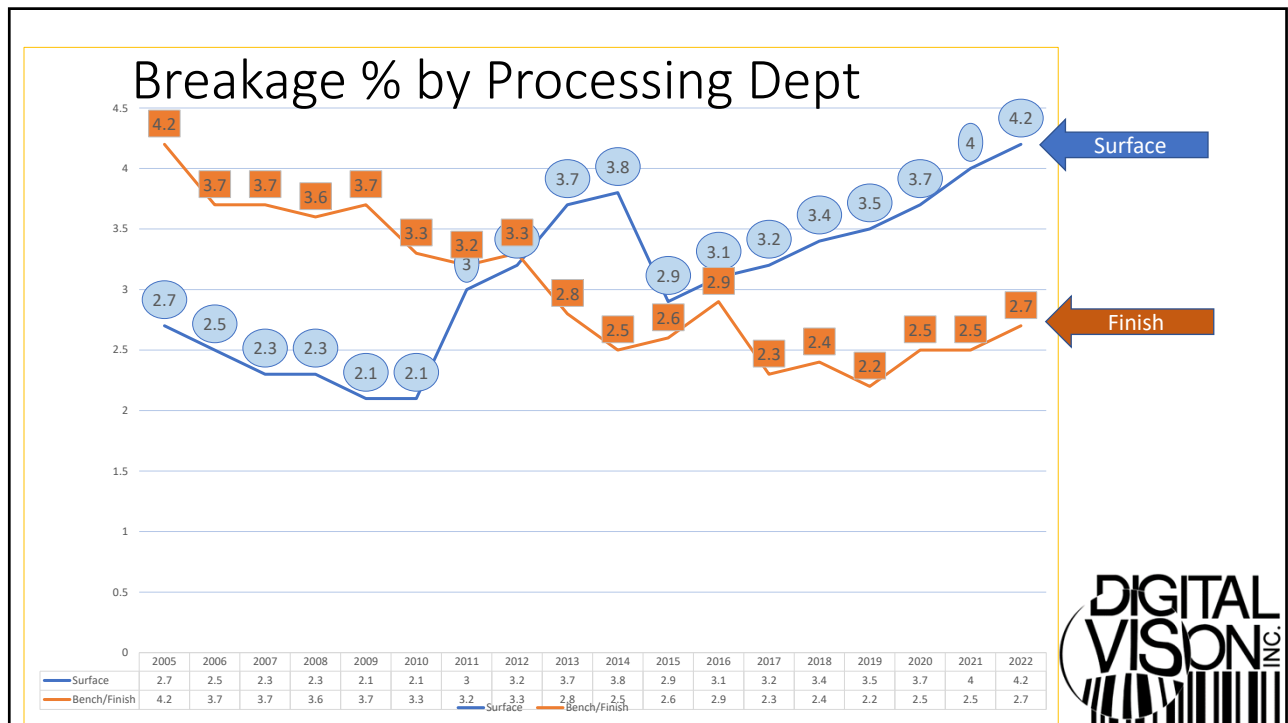
41



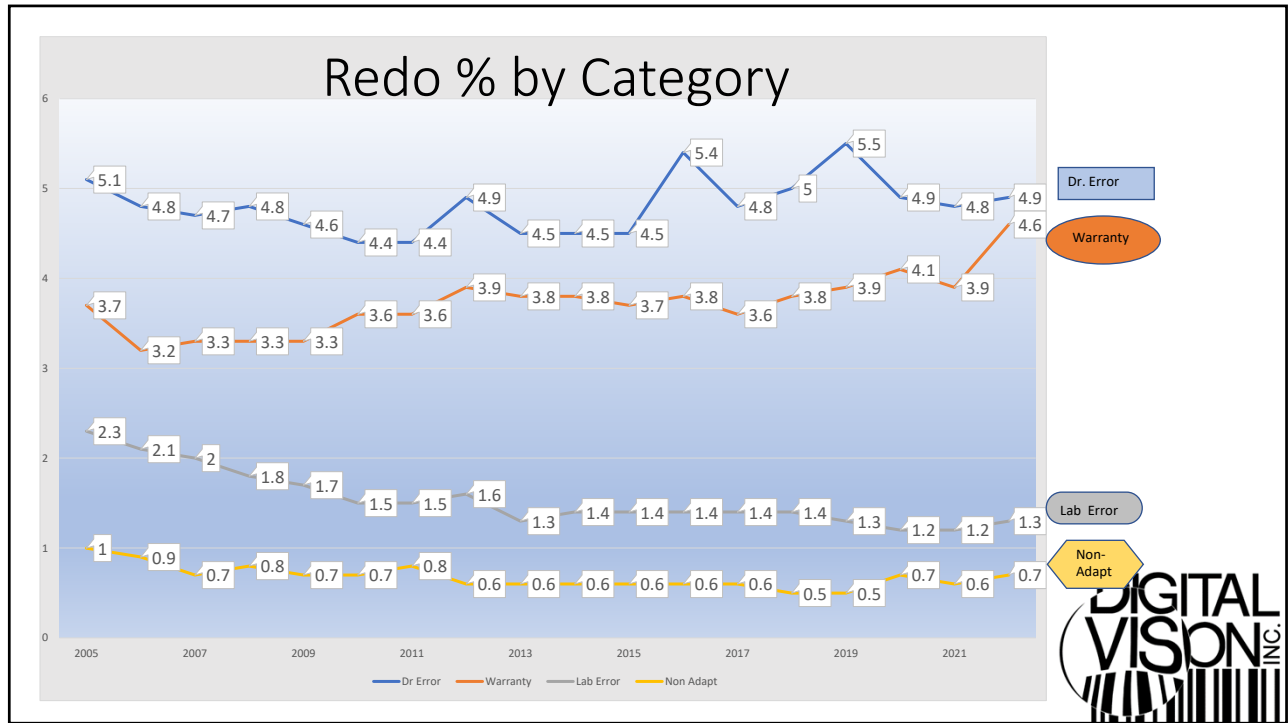
42



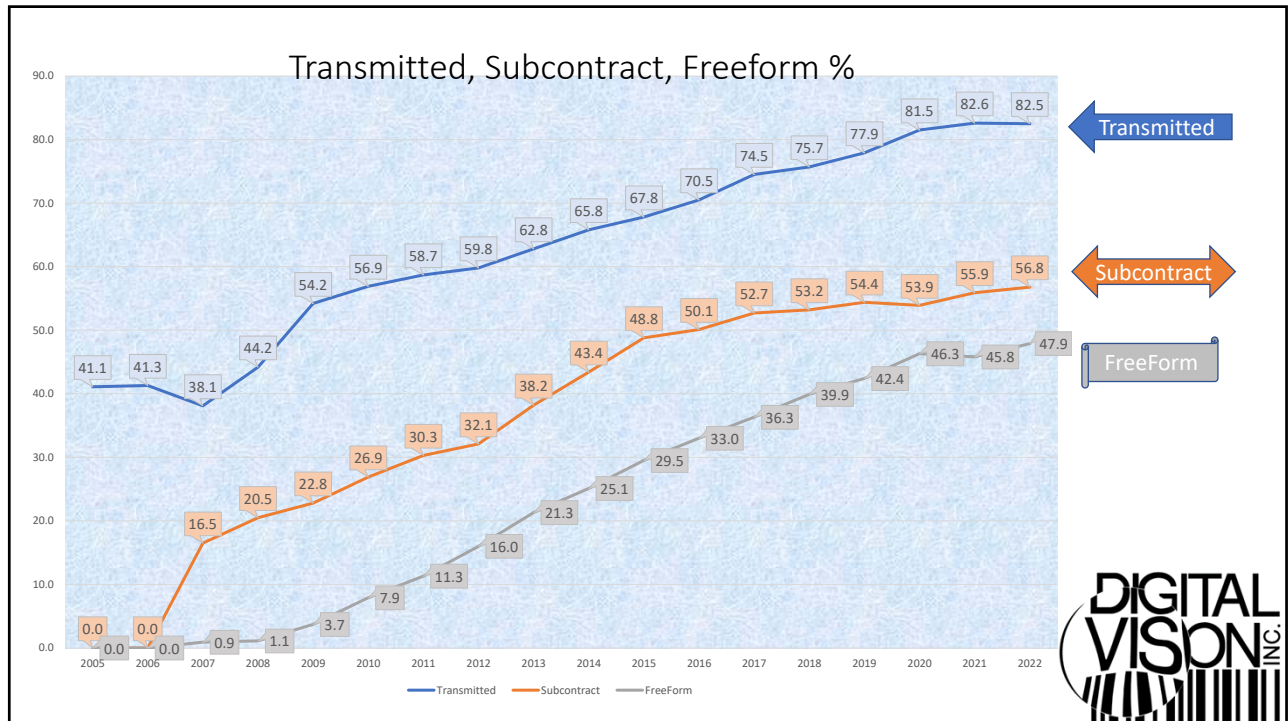
43



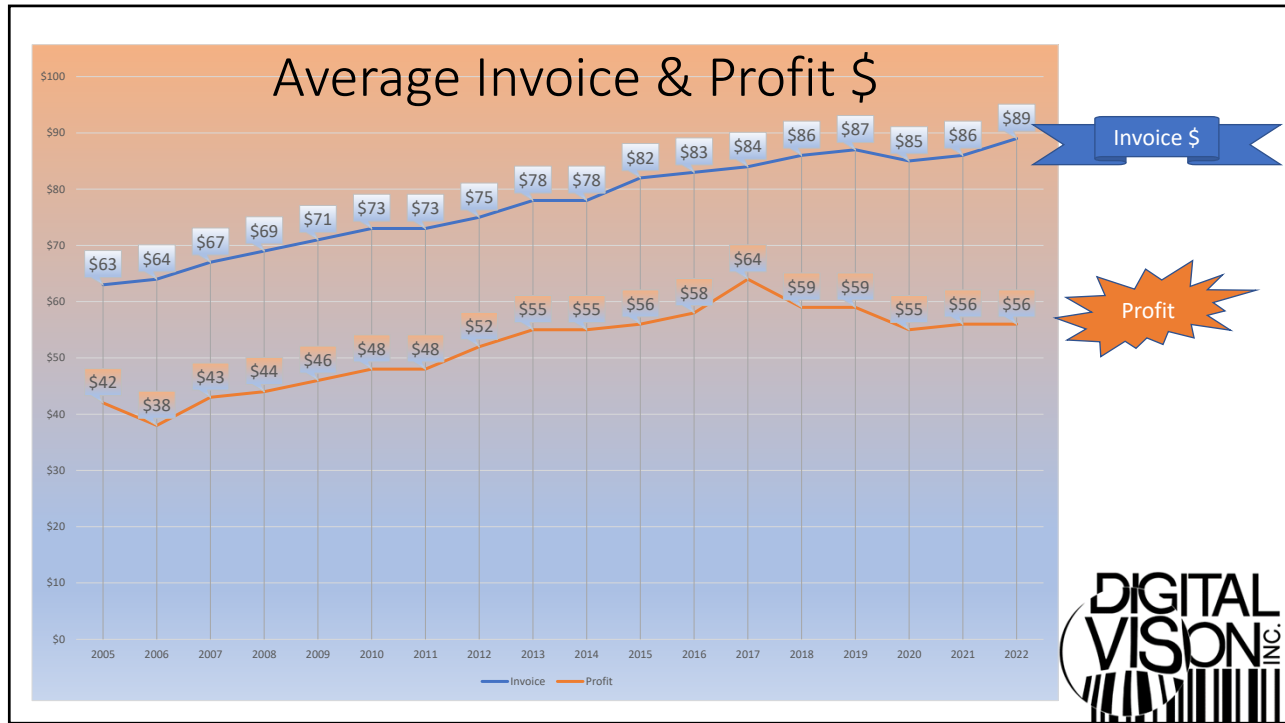
44



45



46



47

MO_STATS.TXT Report

***** SELF CONSUMER LABS *****

MATERIAL (L)	HI	LO	AVG	LAB	STYLES (L)	HI	LO	AVG	LAB
=====					=====				
-GLASS	0%	0%	0%	0%	-SV	59%	2%	41%	0%
-PLASTIC	58%	2%	23%	0%	-PROG	63%	8%	37%	0%
-POLY	85%	9%	54%	0%	-ASPHERIC	60%	3%	12%	0%
-HIRES	74%	2%	18%	0%	-OTHER	16%	5%	10%	0%
PHOTO CHANGE	25.6%	6.5%	18.8%	0.0%	FREE FORM	69.3%	4.5%	35.4%	0.0%
BREAKAGE (L)	12.6%	0.6%	5.3%	0.0%					
=====									
-BRK/SURFACE	8.6%	0.5%	3.2%	0.0%					
-BRK/BENCH	5.5%	0.3%	2.2%	0.0%					
JOBSDAY (L)	5576	41	1735	0					
DAYS/JOB (L)	12.8	1.7	4.1	0.0					
UNCUTS (N)	40.0%	2.0%	20.0%	0.0%					
REDOS (R)	13.5%	4.9%	8.9%	0.0%					
=====									
-LAB	1.7%	0.3%	0.7%	0.0%					
-DOCTOR	10.3%	0.3%	3.8%	0.0%					
-NON-ADAPTS	5.4%	0.2%	1.9%	0.0%					
-WARRANTY	8.8%	0.1%	2.8%	0.0%					
COATINGS					JOB ORIGIN				
=====					=====				
-AR	99.9%	11.6%	65.5%	0.0%	-LAB	1.7%	0.1%	0.4%	0.0%
-SCR	34.5%	4.7%	12.7%	0.0%	-RxWizard	0.3%	0.3%	0.0%	0.0%
-UV	6.2%	0.2%	1.2%	0.0%	-SENDRX	0.0%	0.0%	0.0%	0.0%
-COLOR	18.4%	0.1%	2.2%	0.0%	-EPX	100.0%	32.5%	93.5%	0.0%
					-VWEB	65.8%	1.9%	6.2%	0.0%
					-EYEF	0.0%	0.0%	0.0%	0.0%
FILLRATE					SUBCONTRACTED WORK				
=====					=====				
-STOCKED	99.5%	75.1%	93.2%	0.0%	-TOTAL JOB	77.3%	0.1%	24.6%	0.0%
-STK&NSTK	99.5%	27.7%	76.4%	0.0%	-COAT ONLY	63.6%	2.0%	14.3%	0.0%

DIGITAL VISION INC.

48

