

1

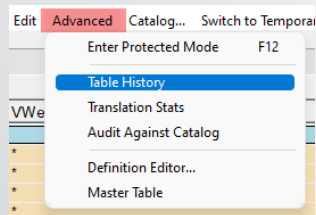
Translation Tables  
Improvements Under the Hood

- Old structure relied on flat files
- Table data now stored in a dedicated database
- Tables are smarter
  - Table History
  - Translation stats
  - Audit against Catalog
  - Protection against unwanted deletions

The slide has a light gray background with a blue and white geometric shape on the right side. The title 'Translation Tables Improvements Under the Hood' is in a large, black, sans-serif font. Below the title is a bulleted list of improvements. On the right side, there is a photograph of a mechanic in a brown uniform working on the engine of a white car.

2

## Table History

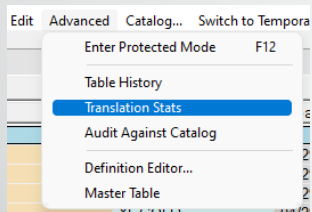


- Helpful for troubleshooting
- Whodunit... and when?

Edit Type	Edit Date	Edit Operator	VWeb Style	VWeb Material	Desc	DVI Style
Merge	2012-01-13 16:54:58	MT	AFATIGUE		anti-fatigue	
Merge	2012-03-15 08:19:03	MT	ESSCOMPUTER		computer	
Merge	2012-05-21 07:26:45	MT	IPSE04E		vx ipseo	
Edit	2012-05-31 17:16:12	MT	TOUTLOOK	TEGRA OUTLOOK	outlook	
Merge	2012-07-09 08:44:14	MT	FREEDOMID		freedom id	
Edit	2012-08-31 14:56:41	MT	UNIQUEDS	Kodak Unique DS	KODAK UNIQUE DS	
Catalog Insert	2012-08-31 14:56:41	MT	KODAK UNIQUE	UNIQUEDS	Kodak Unique DS	
Catalog Insert	2012-08-31 14:56:41	MT	UNIQUEDS	Kodak Unique DS		
Edit	2012-08-31 14:56:58	MT	ULTEXAL	ULTEX BIFOCAL	RD40	
Catalog Insert	2012-08-31 14:56:58	MT	KODAK UNIQUE	UNIQUEDS	Kodak Unique DS	
Catalog Insert	2012-08-31 14:56:58	MT	UNIQUEDS	Kodak Unique DS		
Merge	2012-09-11 08:36:26	MT	DEFINITY3		definity 3	

3

## Translation Stats



- Housekeeping tool to identify:
  - Obsolete entries
  - Lines with no usage
  - Just because it has usage, doesn't mean entry is valid

VWeb Style	VWeb Material	Desc	DVI Style	Created	Modified	Usage	Last Use
VIPGOLD	*	SOLA VIP GOLD	VIP GOLD	04/29/19 13:15 (@@)		0	
VISUALITY	*	SOLA VISUALITY	VISUALITY	04/29/19 13:15 (@@)		0	
XL	*	SOLA XL	XL	04/29/19 13:15 (@@)		0	
XLGOLD	*	SOLA XL GOLD	XL GOLD	04/29/19 13:15 (@@)		0	
ZEISSOFFICEDESK	*		ZEISS OFFICEDESK	04/29/19 13:15 (@@)		0	
ZEISSOFFICEROOM	*		ZEISS OFFICEROOM	04/29/19 13:15 (@@)		0	
ACCESS75	*	SOLA ACCESS 75	ACCESS 75	04/29/19 13:15 (@@)		2	10/29/19
AMPLITUDEHD	*		AMP HIDEF	10/12/20 15:17 (MT)		2	09/02/20
ATTITUDE-IISP	*		AUTO II ATT 18	12/28/19 10:12 (MT)		2	11/23/19
ATTITUDE3FASH15	*		ATT III FASHN 15	08/20/21 11:12 (MT)		2	07/02/21
COMFORTW2	PL-50-TRAN-GG07...		COMFORT W2+	04/29/19 13:15 (@@)		2	01/23/20
COMPACT	*	AO COMPACT	SYN EASY M COMP	04/29/19 13:15 (@@)		2	07/20/20

4

## Audit Against Catalog

The screenshot shows a menu with the following items: Edit, Advanced, Catalog..., Switch to Temporary, Enter Protected Mode (F12), Table History, Translation Stats, **Audit Against Catalog** (highlighted), Definition Editor..., and Master Table.

VWeb Style	VWeb Material	Desc	DVI Style	Created	Modified	Usage	Last Use
PHYSIOEA	*	VARILUX PHYSIO ENHANCED AZIO	VX PHYSIO E AZIO	04/29/19 13:15 (@@)		2	06/08/21
PHYSIOEE	*		VX PHYSIO E EC	04/29/19 13:15 (@@)		2	10/21/20
PHYSIOEF	*	VARILUX PHYSIO ENHANCED FIT	VX PHYSIO E FIT	04/29/19 13:15 (@@)		45	02/05/22
PHYSIOEFSP	*		VX PHYSIO E FIT	03/16/20 11:58 (MT)		18	06/17/21
PHYSIOEI	*	VARILUX PHYSIO ENHANCED INDIA	VX PHYSIO E IND	04/29/19 13:15 (@@)		0	
PHYSIOS	*		VX PHYSIO SHORT	04/29/19 13:15 (@@)		473	02/03/22
PHYSIOS	PL-50-EEBS-NONE-00		VX PHYSIO S DS	11/22/19 15:08 (MT)		78	05/22/21
PHYSIOS	PO-58-FFRS-NONE-00		VX PHYSIO S DS	11/09/20 15:20 (MT)		78	12/29/21

- Available for Tables that use a catalog
  - Visionweb/Visionweb2
  - Marks invalid entries for deletion

5

## Added Protection to Table Data

- Right-click on entries for options to make data:
  - Undeletable (important for top-level wild-carded lines)
  - Read-only
- Copy to Temporary used for creating and merging new/similar lines

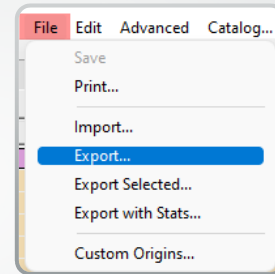
The screenshot shows a table with columns: Style, Material, Color, and Style. A right-click context menu is open over a row, showing options: Undeletable, Read-only, Copy to Temporary, and Copy to Temporary.

Style	Material	Color	Style
*	*	*	*
ASPHERIC-SV	PLY	*	*
COMFORT W2+	*	*	*
PHYSIO W3+	*	*	*
PVP	*	*	*

6

## Table Export Options

- Every table can be exported to a tab-delimited file
- Useful for moving table data between DVI systems
- Allows ease of importing from external sources, like Excel

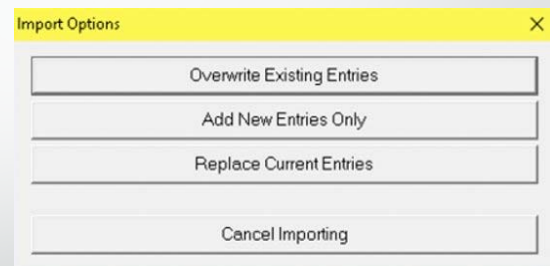


A	B	C	D	E
TRUCLEARSD	PH-67-TRAN-BRN8-00		TRUCLEAR SD HD02	
TRUCLEARSD	PH-67-TRAN-GRY8-00		TRUCLEAR SD HD02	
TRUCLEARSD	PL-50-TRAN-BRN8-00		TRUCLEAR SD HD02	
TRUCLEARSD	PL-50-TRAN-GRY8-00		TRUCLEAR SD HD02	
TRUCLEARSD	PO-58-TRAN-BRN8-00		TRUCLEAR SD HD02	
TRUCLEARSD	PO-58-TRAN-GG08-00		TRUCLEAR SD HD02	
TRUCLEARSD	PO-58-TRAN-GRY8-00		TRUCLEAR SD HD02	
TRUCLEARSD	TV-53-TRAN-BRN8-00		TRUCLEAR SD HD02	

7

## Table Import Options

- Import function allows options for inserting data:
  - Overwrite entire table
  - Add new entries only
  - Replace existing entries with new data



8

## Subcontracting 101

- Add Subcontract Vendor <2355>
  - Enables checkoff requirements to be satisfied
  - Allows maximum # of jobs to be set, along with overflow vendors

Subcontractor Detail SIE  
F1: Save and Return

SIE: SIERRA OPTICAL

Address: 8850 TERA BYTE CT UNIT H  
City: RENO State: NV Zip: 89521  
Contact: WARREN MEYER

Shipping Inhibits: Coat: Y, Tint: A, Edge: [ ], Insp: [ ]  
Checkoffs: COAT, [ ], [ ]

Jobs/Day: #Today: 0, Max: 50, Overflow to: VCDO-VSPONE COLUMBUS OVERFLU

9

## Dropship to Account

- Dropship to Account (only)
  - Receiving lab ships directly to sending lab's account (as mail-to-patient)
- Dropship to Account + Invoice Dropship
  - Receiving lab ships using sending lab's custom invoice (setup required)
  - Job at sending lab is automatically shipped

Lab Setup

Lab: ACH Description: ACH LAB Web ID#: 920540

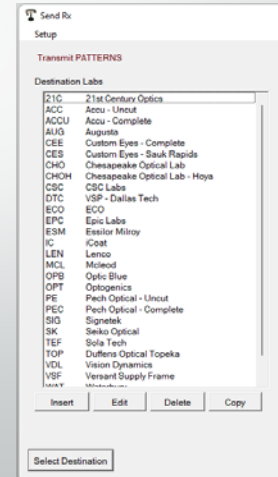
Dropship to Account  Invoice Dropship

Dropship to Account  Invoice Dropship

10

## Send Pattern to Lab <172>

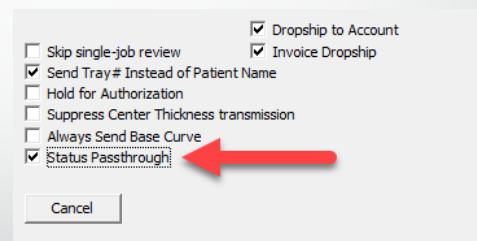
- DVI-Destination labs only
- Transmit pattern for job(s) previously transmitted
- Patterns are auto-attached by Combobulator at receiving lab



11

## Status Passthrough

- Statuses from manufacturing lab appear on sending lab's web statuses and work-in-process reports
- Shipped status from manufacturing lab is not passed through



12

